

# Guide Your Digital Workflow Your Way

With [glidewell.io](https://glidewell.io)™



**glidewell.io**™  
IN-OFFICE SOLUTION

[www.glidewell.io](https://www.glidewell.io) | 844-949-7184

# SAME-DAY DENTISTRY

Has Never Been Easier

---

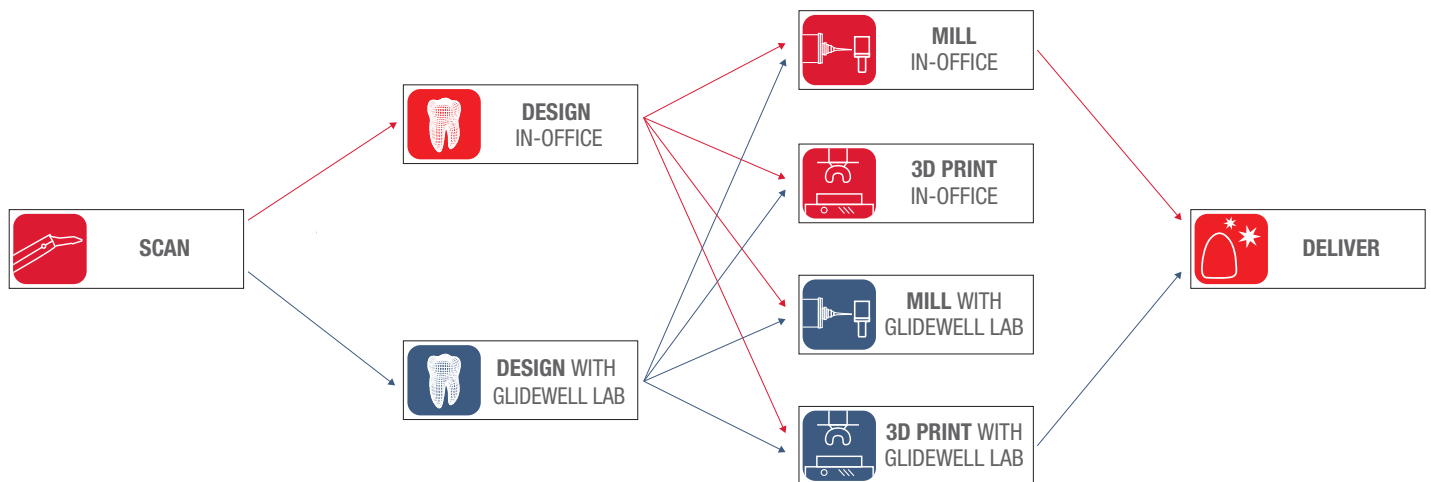
Effortlessly mill the crowns you want when you want:

- Mill fully sintered BruxZir® crowns and bridges with no oven time required – just polish and cement, and you're done.
- Let MarginAI™ and CrownAI™ do the design work for you so you can spend time with your patients.
- You're connected directly to Glidewell for training and support at any time.
- Love your scanner? Great – glidewell.io™ is an open system and works with your preferred scanning system.

## WITH GLIDEWELL.IO™,

You're in Control. We're Here to Help.

---



## DIRECT SUPPORT FROM GLIDEWELL

Unlike systems sold by a distributor, every glidewell.io purchase comes with white-glove treatment — giving you the maximum value from your investment.

- Get hands-on installation and one-on-one training in your practice on Day One.
- Enjoy immediate access to glidewell.io support through text, chat, email or phone.
- Access real-time remote design assistance from skilled support technicians.

# THE DIGITAL WORKFLOW

## That Works For You

The glidewell.io™ In-Office Solution enables clinicians everywhere to embrace digital dentistry. With ongoing support every step of the way, we'll meet you wherever you are in your digital journey.



### COLLECT

Use your preferred intraoral scanner to collect a digital impression.

### CONFIRM

Upload the digital impression to the design software and confirm the AI-generated design.

### CREATE

Create the restoration using a chairside mill, 3D printer, or at the Glidewell lab.



“

*The glidewell.io™ In-Office Solution is a perfect way to mill in-office restorations. It's simple to use, and Glidewell's training and support made adopting the new technology stress-free.*”

– Susan McMahon, DMD | Pittsburgh, PA  
glidewell.io user since 2018.

# COLLECT

## SCAN

The glidewell.io In-Office Solution is compatible with the most popular scanners available on the market, and pairs seamlessly with iTero and Medit scanners.

- The fastscan.io Scanning Solution combines Medit® i700® hardware enhanced with Glidewell software to deliver an affordable, straightforward path to digital dentistry.
- Increase case acceptance with treatment planning visual aids through numerous Medit applications.
- Enjoy a seamless connection to Glidewell for a 3-day turnaround and \$20 savings or more per unit on model-free cases.

**Start scanning with the fastscan.io Scanning Solution** for only \$18,990\*

Contact us for current promotional trade-in offers and payment plans for the fastscan.io and Medit i600® wired and wireless models.

\*Pricing is for the wired version of the fastscan.io including a portable cart with laptop and monitor. Packages that include the fastscan.io wireless model or Medit i600® are also available.

Medit and i600 are registered trademarks of Medit Corporation.



***fastscan.io™ lives up to the name — its speed and simplicity are exactly what we needed to expand our in-office treatments at a fraction of the cost of other scanners on the market. The fact that it has no monthly fees and even includes a cart, laptop, and monitor is outstanding.*** ”

– **Joshua Prentice, DDS** | Bend, OR  
glidewell.io user since 2020.

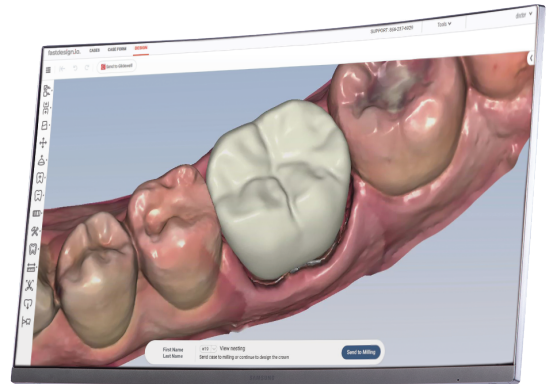


# CONFIRM

## DESIGN

Take the stress out of designing crowns with the simplified AI-optimized software of the fastdesign.io™ Software and Design Station.

- The software marks margins and auto-generates highly accurate, individualized restoration designs.
- Designs are ready for milling in just minutes.
- Get personalized help from Glidewell's expert technical support team when needed.



Scan to see a quick demo of fastdesign.io in action.



*What you all at Glidewell have done with this software is amazing! **You've basically eliminated the learning curve for crown designing with your AI-based software. I could not be more impressed.***

– **Christopher Petrush, DDS** | Pleasant Hill, CA  
glidewell.io user since 2020.

# CREATE



## MILL

Mill a full range of restorative materials for every indication right from your office with the fastmill.io™ In-Office Mill.

- Deliver \$39\* BruxZir® NOW crowns straight from the mill with no oven required.
- Streamline your workflow with the only mill that creates fully sintered BruxZir NOW crowns.
- Give your practice a competitive edge by offering same-day results.
- Choose from a range of materials engineered specifically for the clinical situation, whether your patient needs a bridge or a long-lasting full-coverage crown. Learn more at [glidewell.io/materials](https://glidewell.io/materials).

**Start milling with the fastmill.io In-Office Mill**  
for only \$54,995



Scan to see how Dr. Justin Chi delivers a BruxZir® NOW crown for tooth #14 in under one hour using the glidewell.io™ In-Office Solution.

\*gold.io Preferred Pricing.



***The glidewell.io™ In-Office Solution brings the ‘wow’ factor. In just one visit, your patient is receiving a beautiful BruxZir® NOW crown that’s going to last a lifetime.*** ”

– **Christina Do, DDS** | Costa Mesa, CA  
glidewell.io user since 2018.

# CREATE

## 3D PRINT

The fastprint.io™ 3D Printing Solution combines the innovation of LuxCreo with the simplified workflow of the glidewell.io™ In-Office solution to give clinicians an efficient and cost-effective 3D printing experience.

- Use Glidewell resins to easily print models and nightguards, plus a variety of LuxCreo compatible materials to create crowns, retainers, and aligners.
- Boost your efficiency and output with the same AI-powered design software used in Glidewell's lab.
- Directly print clear appliances with minimal post-processing required using LuxCreo Digital Polishing™ resin technology.

**Start printing with the fastprint.io 3D Printing Solution**  
for only \$16,990



Scan to see how the new fastprint.io™ 3D Printing Solution delivers a user-friendly, streamlined workflow to boost your clinical success.

# LET'S GET STARTED



## glidewell.io™ Bundle with fastscan.io™

**\$69,995\***

Includes fastscan.io with cart configuration; fastdesign.io; fastmill.io; 12-month warranty; one-year software license; 45 milling blocks\*\* (up to \$1,935 value, included with gold.io Preferred Pricing three-month trial); and a free exclusive CE course in Newport Beach with airfare and two-night stay for doctor and one team member.

## À LA CARTE



### fastmill.io™ Package

**\$54,995\***

Includes fastmill.io; fastdesign.io; 12-month warranty, one-year software license; 45 milling blocks\*\* (up to \$1,935 value, included with gold.io Preferred Pricing three-month trial); and a free exclusive CE course in Newport Beach with airfare and two-night stay for doctor and one team member.



### fastscan.io™ Scanning Solution

**\$18,990\***

Includes fastscan.io powered by Medit i700 hardware and Glidewel-enhanced software; 1-year warranty; a portable cart, laptop, and monitor; comprehensive training and dedicated support team.



### fastprint.io™ 3D Printing Solution

**\$16,990\***

Includes fastprint.io; washing and curing stations; starter kit; 1-year warranty; comprehensive installation, training, and technical support directly from Glidewel.

Interested in an iTero intraoral scanner? Contact us for more information about current prices and promotions.



*In the first year alone of switching to glidewell.io™, I saved my office \$80,000.*

– **Scott Barton, DDS** | San Antonio, TX  
glidewell.io™ user since 2018.



Ready to learn more about what glidewell.io can add to your practice?

Let's talk! Scan the code and provide your information and we'll be in touch soon.

**glidewell.io™**  
IN-OFFICE SOLUTION

\*Prices do not include shipping or applicable taxes.

\*\*15 free milling blocks per month (any combination of blocks up to \$650 in value).