

# EXPORTING FROM **Panoramic Encompass™**

---

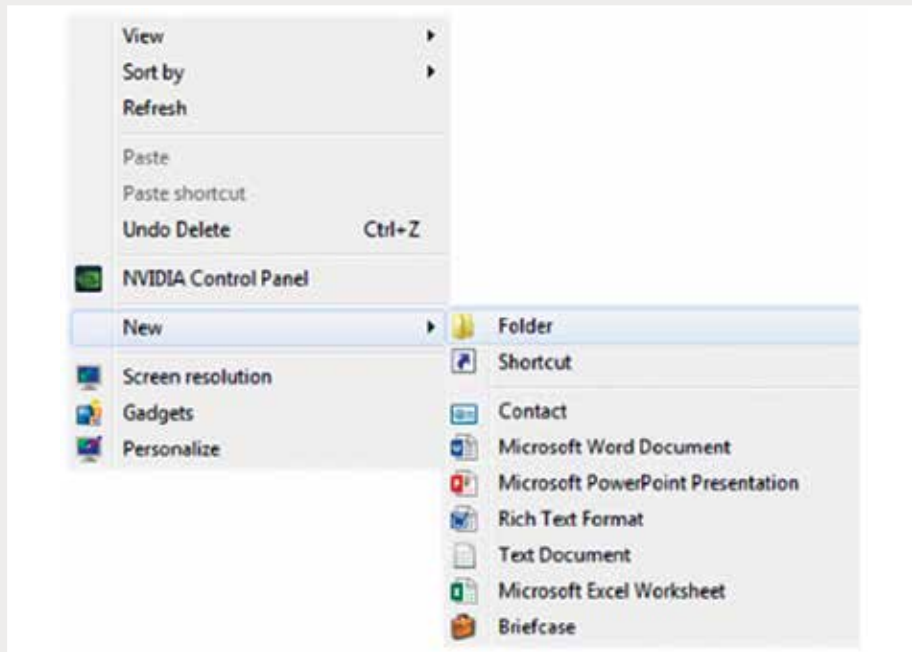
UPLOAD GUIDE



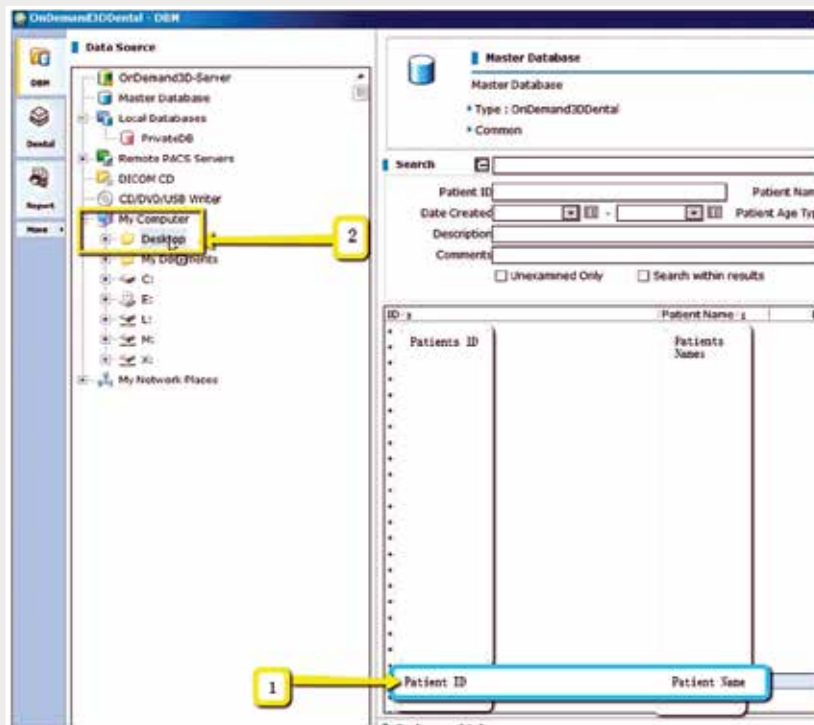
---

866-497-3692 • [glidewelldental.com](http://glidewelldental.com)

Note: If using the Instrumentarium Dental OP300 or Gendex GXDP-700™, instructions will not apply. Please contact your local representative for assistance on extracting the raw data from your CT scanner.

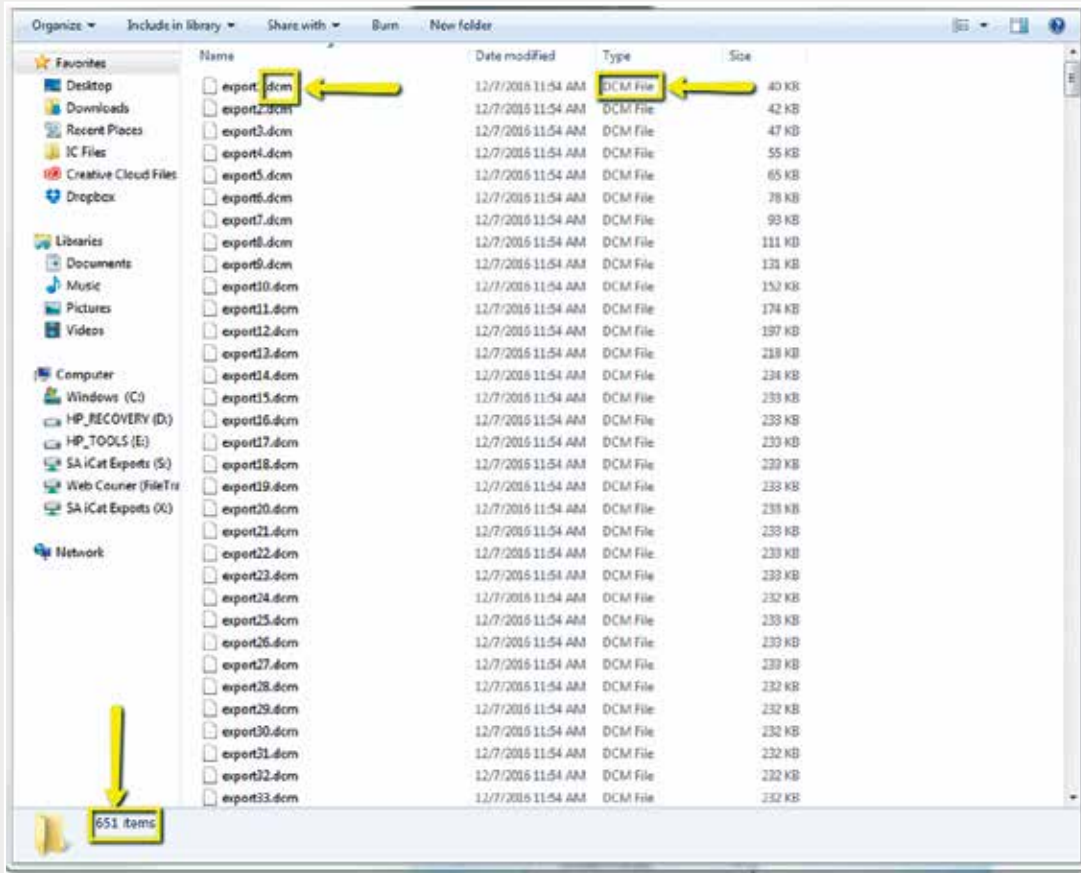


Step 1: Right-click on an empty space on your desktop to create a new folder ("New" → "Folder"). Type in the patient name and click "Enter".



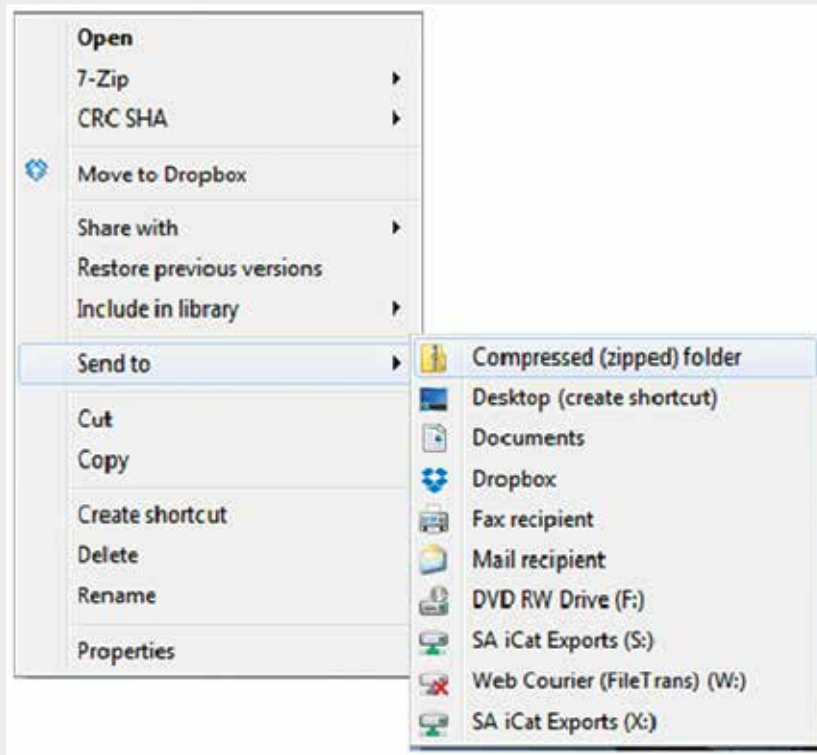
Step 2: In the Master Database, click on the patient scan to select, but do not open. Under "Data Source" on the left of the screen, click on the (+) next to "My Computer" to expand the options. Left-click on the patient scan and drag to your desktop.

Note: If using the Instrumentarium Dental OP300 or Gendex GXDP-700™, instructions will not apply. Please contact your local representative for assistance on extracting the raw data from your CT scanner.



Step 3: A window will appear with DICOM data. Confirm the .dcm files were exported correctly (there should be several hundred files).

Note: If using the Instrumentarium Dental OP300 or Gendex GXDP-700™, instructions will not apply. Please contact your local representative for assistance on extracting the raw data from your CT scanner.



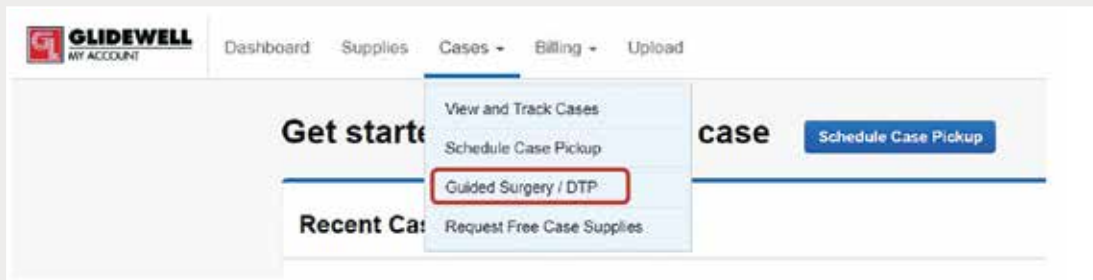
3

Step 4: Return to your desktop and right-click on the patient's folder to send to a compressed folder ("Send to" → "Compressed (zipped) folder"). A duplicate folder will be created with either a zipper or a blue "Z". Note: If following a Dual Scan Protocol, zip scans individually and label accordingly (i.e., "Patient Scan" and "Dental Scan").

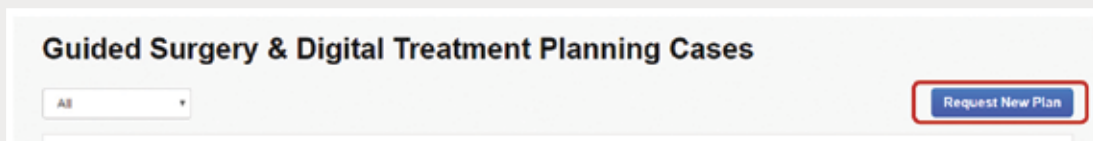


Step 5: Upload your case on [glidewelldental.com](http://glidewelldental.com), then click and log in to "My Account". Note: Use Google Chrome when uploading your case; additionally, if you do not have an account, please contact us and we will set it up for you. Your scan can also be sent on a disc or USB drive via standard shipping methods if digital upload is not possible.

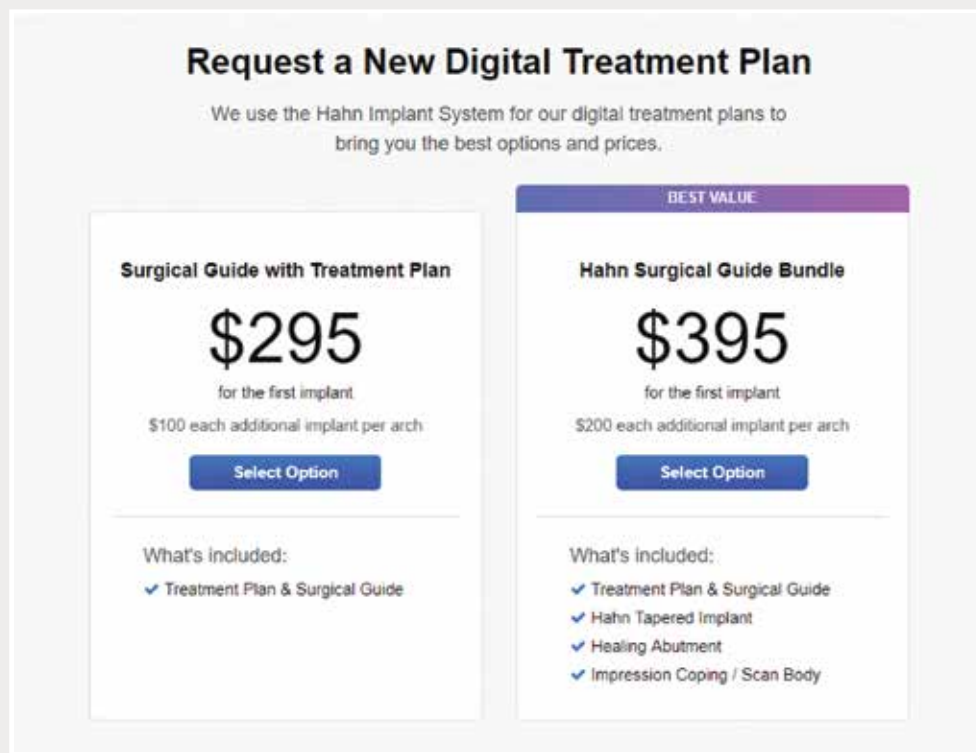
Note: If using the Instrumentarium Dental OP300 or Gendex GXDP-700™, instructions will not apply. Please contact your local representative for assistance on extracting the raw data from your CT scanner.



Step 6: Select "Cases" → "Guided Surgery/DTP".



Step 7: Select "Request New Plan".



Step 8: Select desired package.